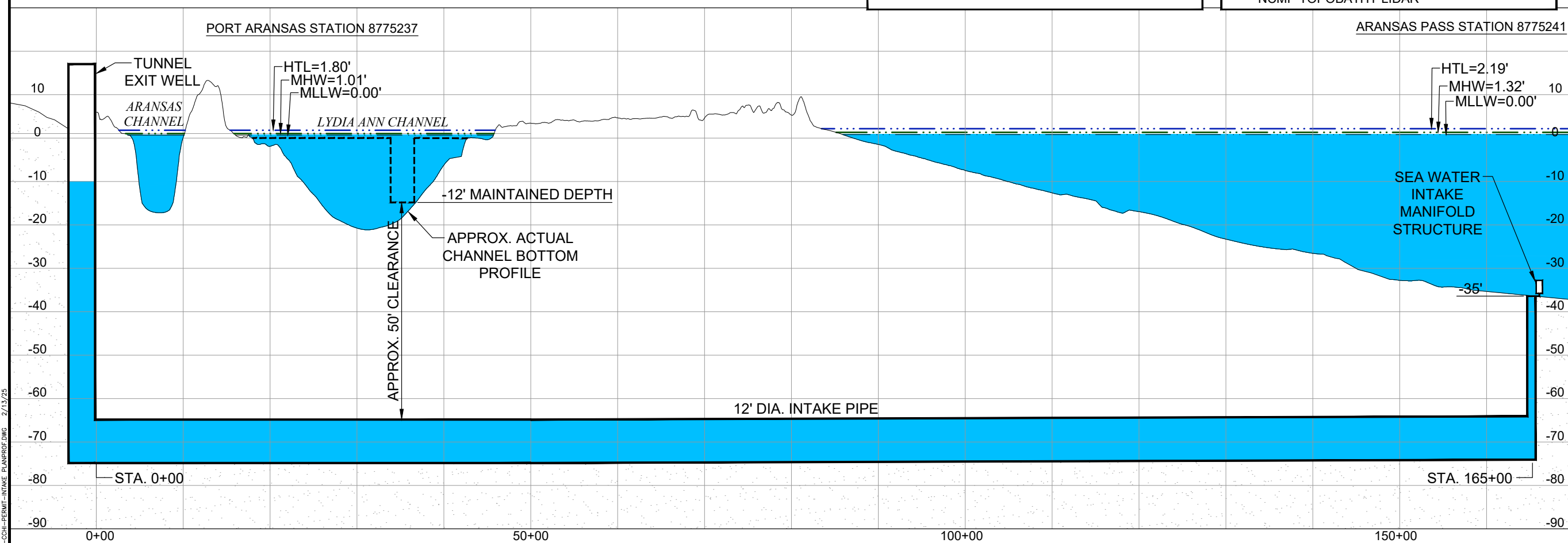
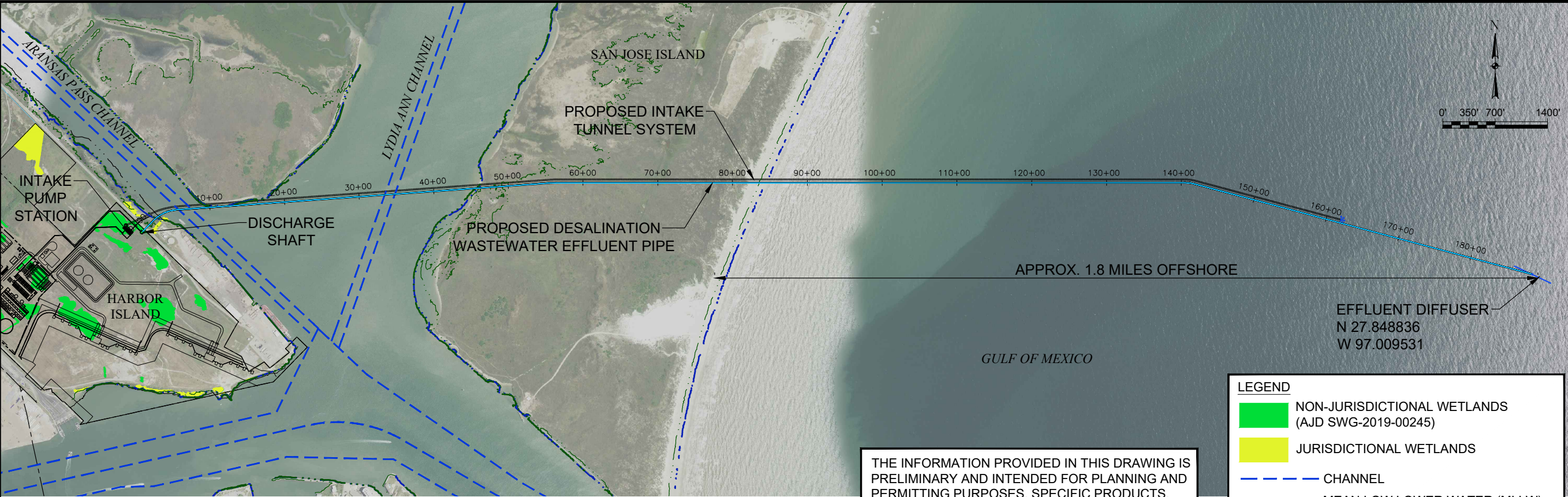


THE INFORMATION PROVIDED IN THIS DRAWING IS PRELIMINARY AND INTENDED FOR PLANNING AND PERMITTING PURPOSES. SPECIFIC PRODUCTS, DIMENSIONS, AND MATERIALS WILL BE SELECTED IN THE FINAL DESIGN.



451565-CCHI-PERMIT-INTAKE PLANPROF.DWG 2/13/25



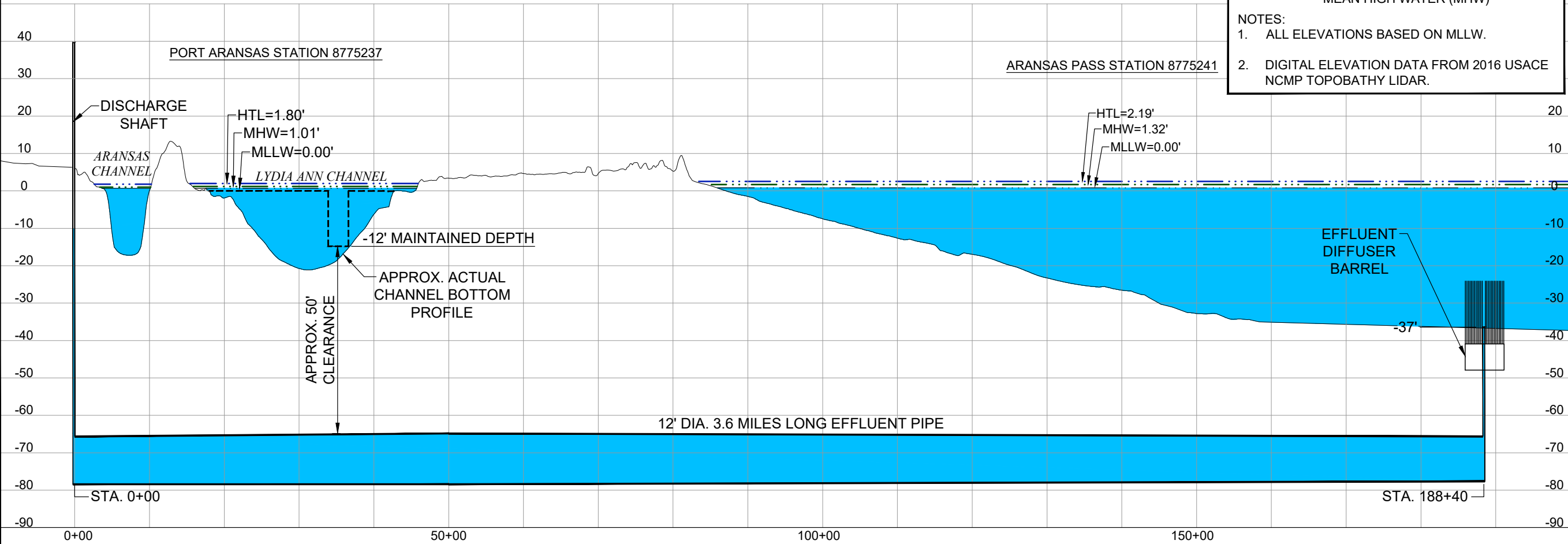
THE INFORMATION PROVIDED IN THIS DRAWING IS PRELIMINARY AND INTENDED FOR PLANNING AND PERMITTING PURPOSES. SPECIFIC PRODUCTS, DIMENSIONS, AND MATERIALS WILL BE SELECTED IN THE FINAL DESIGN.

**LEGEND**

- NON-JURISDICTIONAL WETLANDS (AJD SWG-2019-00245)
- JURISDICTIONAL WETLANDS
- CHANNEL
- MEAN LOW LOWER WATER (MLLW)
- HIGH TIDE LINE (HTL)
- MEAN HIGH WATER (MHW)

**NOTES:**

- ALL ELEVATIONS BASED ON MLLW.
- DIGITAL ELEVATION DATA FROM 2016 USACE NCMP TOPOBATHY LIDAR.



Rev	Date	Description	By

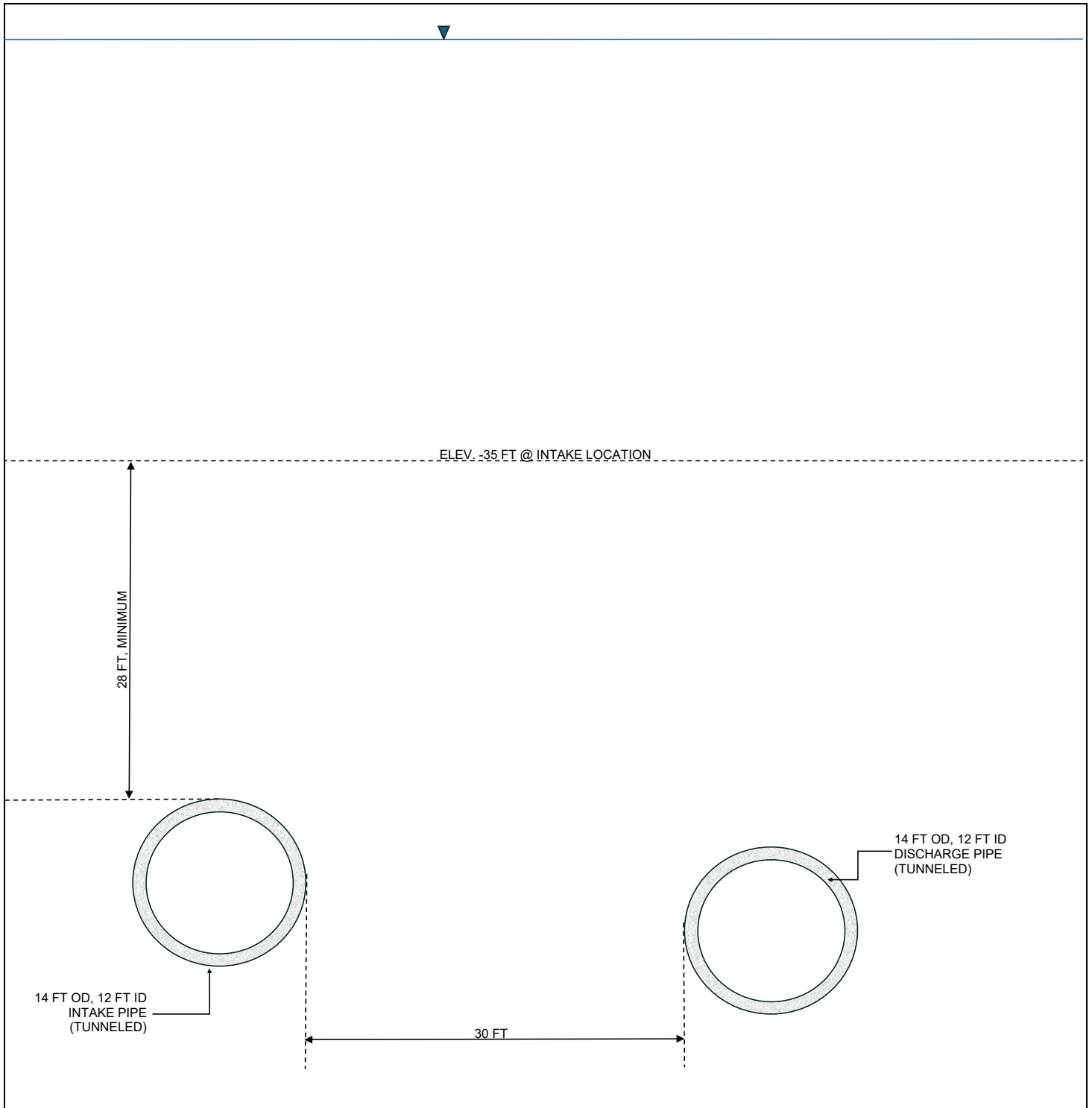
Issue Certification

**PARSONS**  
TBPE REG. NO. F-8008  
9101 BURNET RD  
SUITE #210  
AUSTIN, TX  
(512) 719-6000

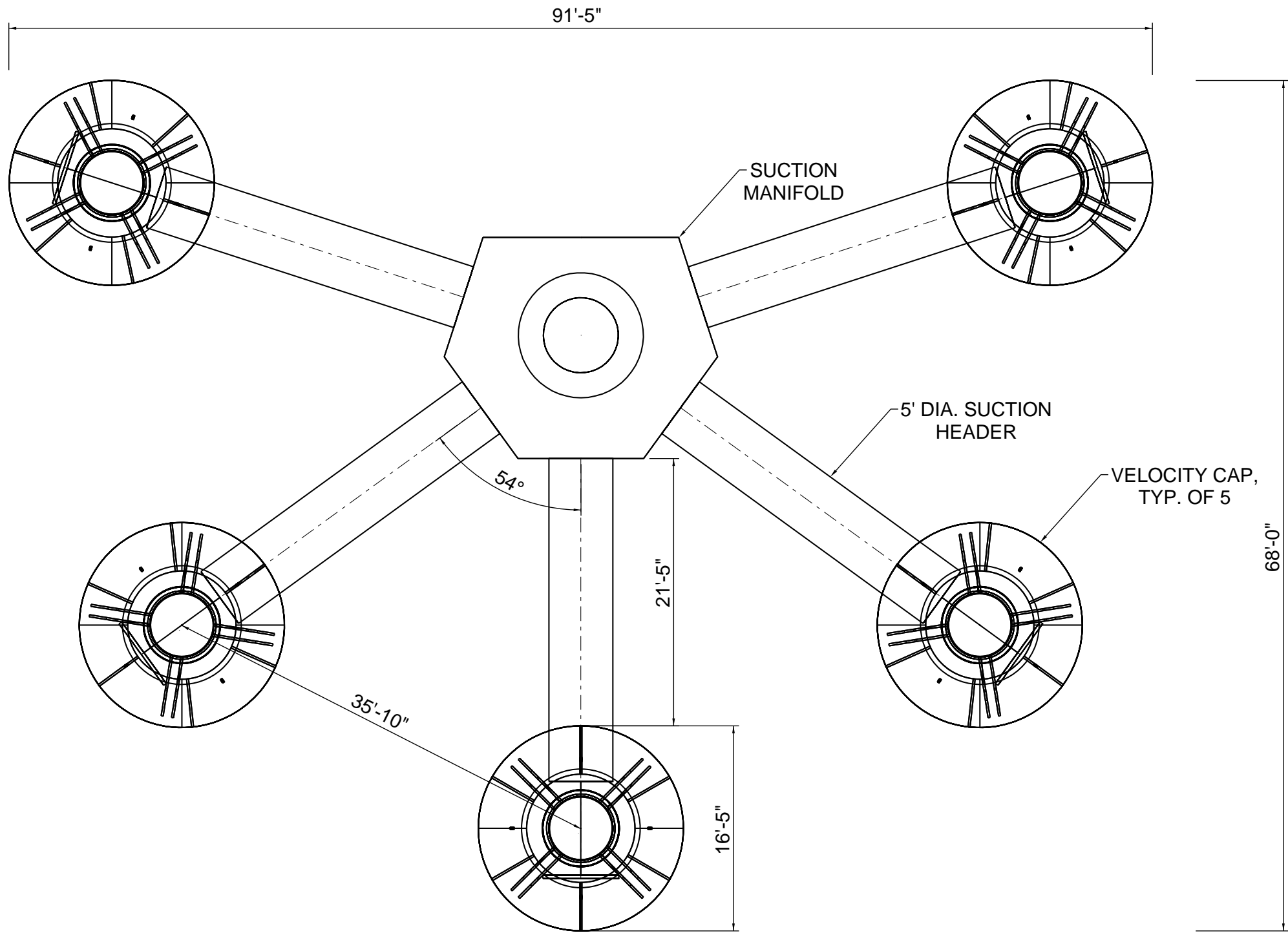
PORT OF CORPUS CHRISTI AUTHORITY  
PROPOSED HARBOR ISLAND DESALINATION FACILITY

**EFFLUENT ROUTE  
PLAN AND PROFILE**

DRAWING NO.	REV.
X	



DRAWING NO. 5: Intake and Diffuser Tunnels Section

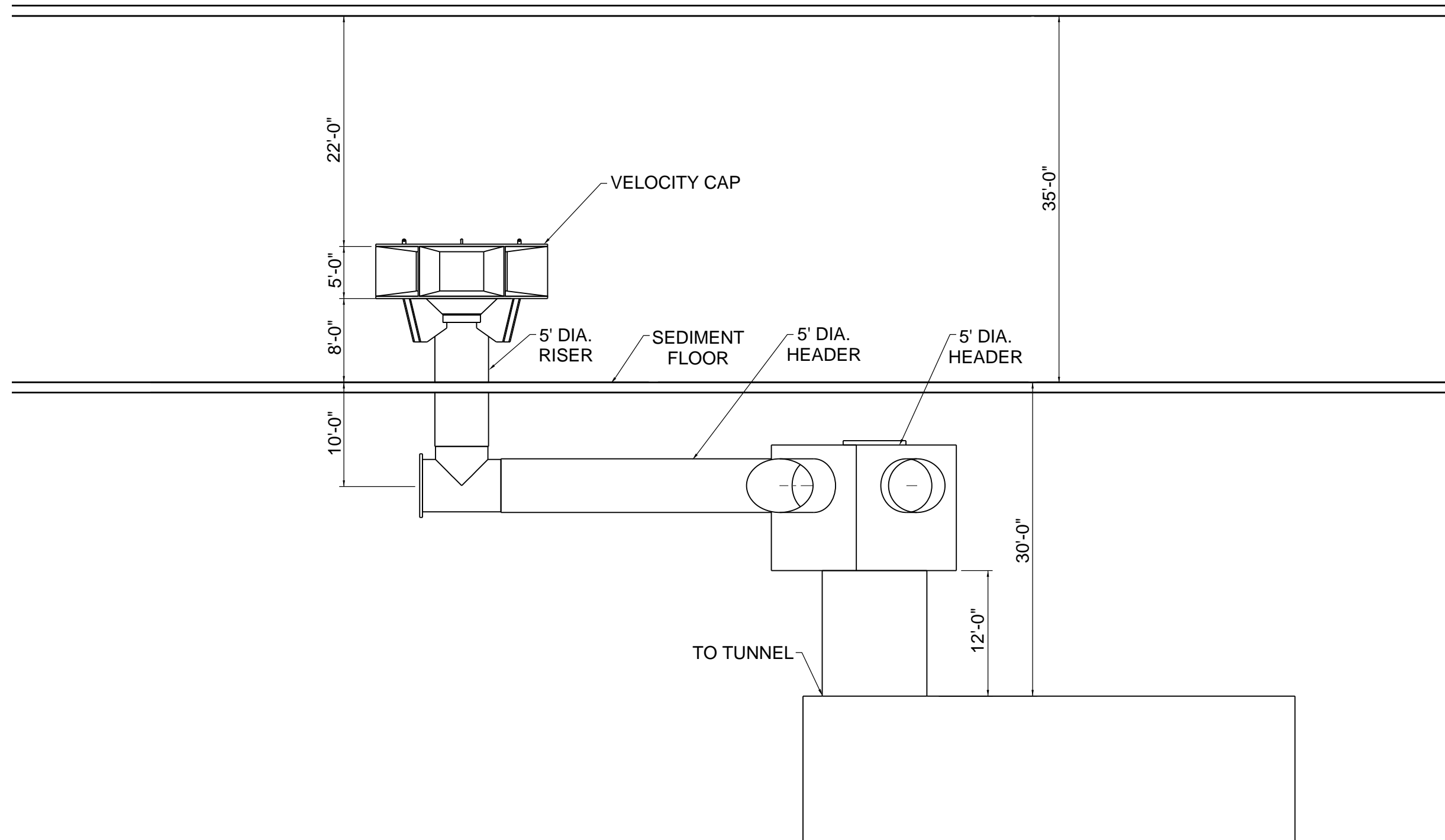


TYPICAL INTAKE STRUCTURE PLAN  
NOT TO SCALE

NOTES:  
1. DIMENSIONS PRESENTED FOR PRELIMINARY LAYOUT AND APPROXIMATE SIZING ONLY. NOT INTENDED FOR CONSTRUCTION.

THE INFORMATION PROVIDED IN THIS DRAWING IS PRELIMINARY AND INTENDED FOR PLANNING AND PERMITTING PURPOSES. SPECIFIC PRODUCTS, DIMENSIONS, AND MATERIALS WILL BE SELECTED IN THE FINAL DESIGN.

Issue Certification		Rev	Date	Description	By
PARSONS					
TBPE REG. NO. F-8008					
9101 BURNET RD					
SUITE #210					
AUSTIN, TX					
(512) 719-6000					
PORT OF CORPUS CHRISTI					
PORT OF CORPUS CHRISTI AUTHORITY		DRAWING NO.		REV.	
PROPOSED HARBOR ISLAND DESALINATION FACILITY		6			
TYPICAL INTAKE STRUCTURE PLAN					

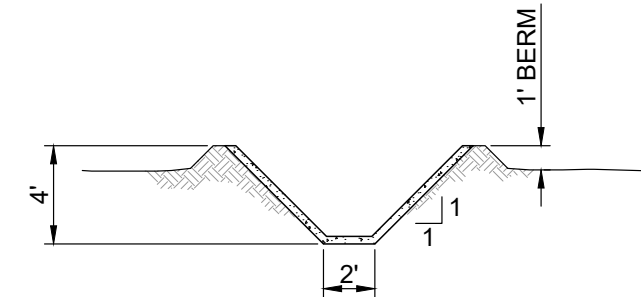


## INTAKE STRUCTURE SECTION

NOT TO SCALE

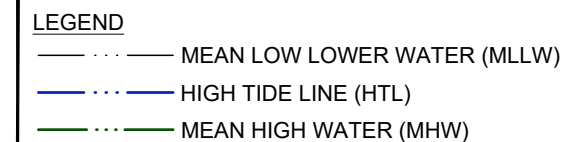
NOTES:  
1. DIMENSIONS PRESENTED FOR PRELIMINARY LAYOUT AND APPROXIMATE SIZING ONLY. NOT INTENDED FOR CONSTRUCTION.

THE INFORMATION PROVIDED IN THIS DRAWING IS PRELIMINARY AND INTENDED FOR PLANNING AND PERMITTING PURPOSES. SPECIFIC PRODUCTS, DIMENSIONS, AND MATERIALS WILL BE SELECTED IN THE FINAL DESIGN.

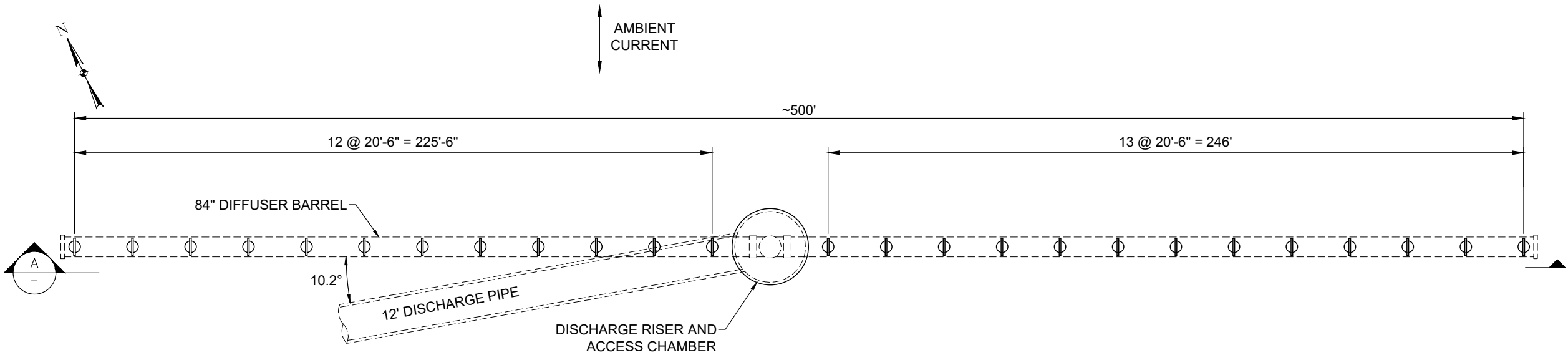


TYPICAL MARINE LIFE RETURN CHANNEL DETAIL 1

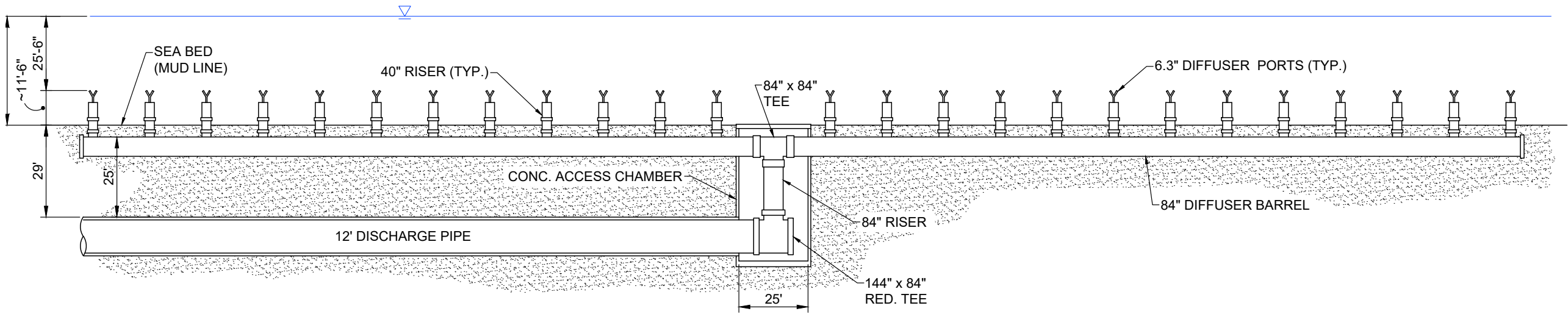
## Issue Certification



A horizontal line segment representing a 40-foot distance. It is divided into three parts by two vertical tick marks. The first part is labeled '10'', the second part is labeled '10'', and the third part is labeled '20''. The total length is labeled '40' at the right end.



DIFFUSER PLAN VIEW



DIFFUSER SECTION A  
—

NOTE:  
DIFFUSER BARRELS AND PORTS SHOWN ROTATED TO  
BE ALIGNED WITH DISCHARGE TUNNEL FOR CLARITY.

THE INFORMATION PROVIDED IN THIS DRAWING IS  
PRELIMINARY AND INTENDED FOR PLANNING AND  
PERMITTING PURPOSES. SPECIFIC PRODUCTS,  
DIMENSIONS, AND MATERIALS WILL BE SELECTED  
IN THE FINAL DESIGN.

Rev	Date	Description	By

Issue Certification

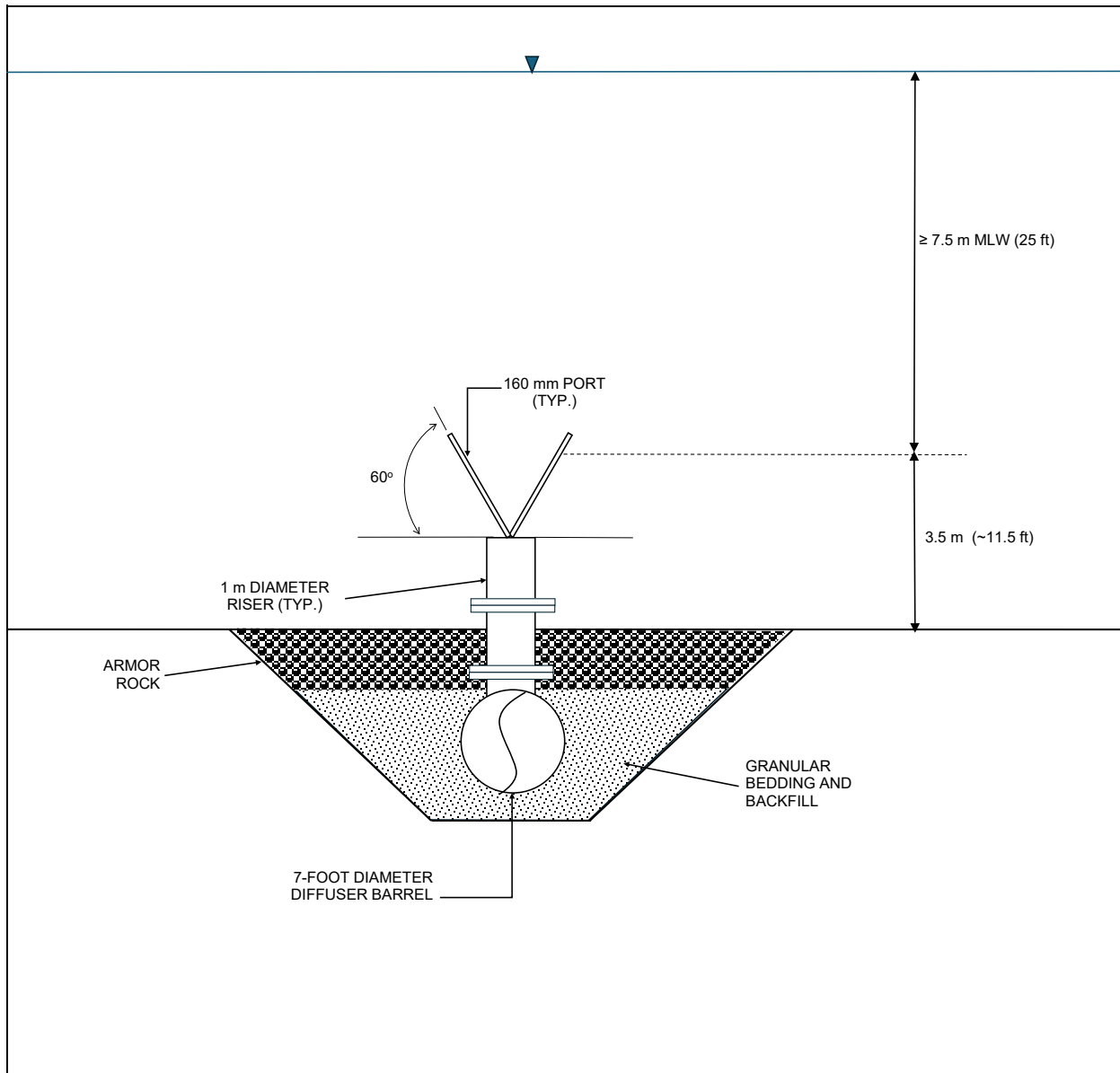
**PARSONS**  
TBPE REG. NO. F-8008  
9101 BURNET RD  
SUITE #210  
AUSTIN, TX  
(512) 719-6000



PORT OF CORPUS CHRISTI AUTHORITY  
PROPOSED HARBOR ISLAND DESALINATION FACILITY

**EFFLUENT DIFFUSER**

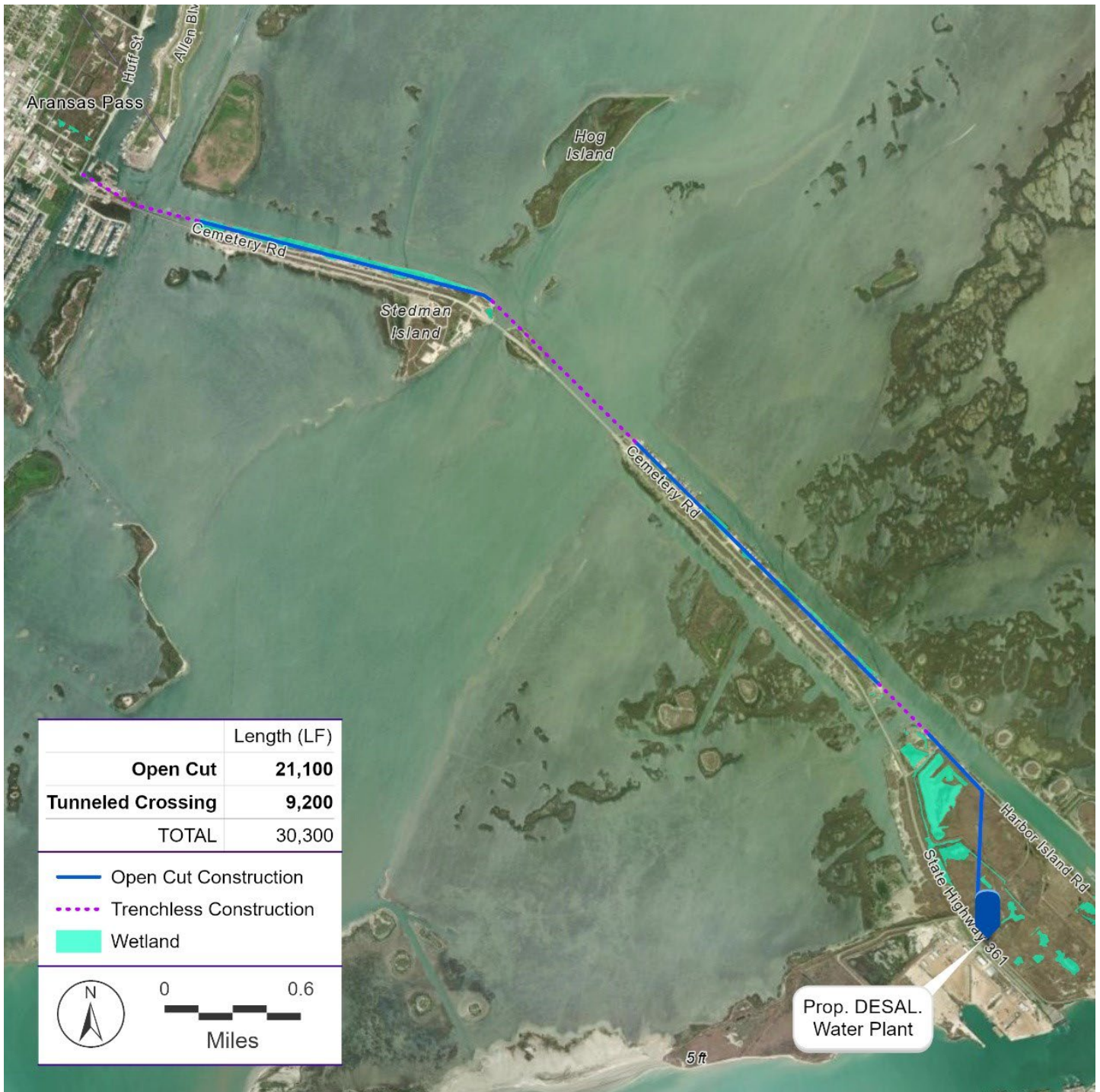
DRAWING NO.	REV.
9	



DRAWING 10: High-rate Diffuser Port and Riser Schematic



DRAWING NO. <b>11</b>	PORT OF CORPUS CHRISTI AUTHORITY PROPOSED HARBOR ISLAND DESALINATION FACILITY	 PORT CORPUS CHRISTI®	<b>PARSONS</b> TBPE REG. NO. F-8008 9101 BURNET RD SUITE #210 AUSTIN, TX (512) 719-6000	Issue Certification				By
	CORPUS CHRISTI SHIP CHANNEL OUTFALL PLAN			Rev	Date	Description		



DRAWING NO. 12: Treated Water Pipeline

